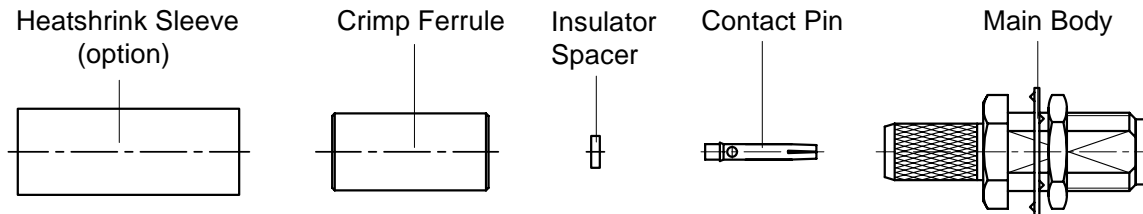


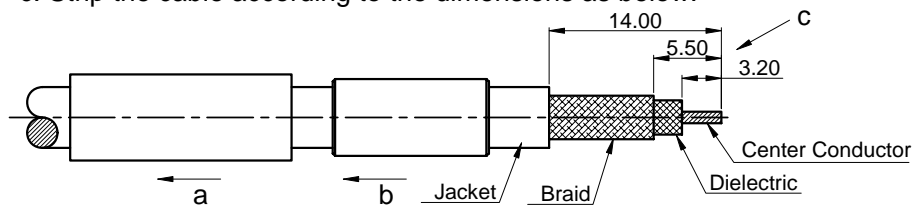
P/N: 60-02-1B18-021 (REV. A)

Description: SMA Straight Bulkhead Female Crimp for RG58/LMR195 Cable



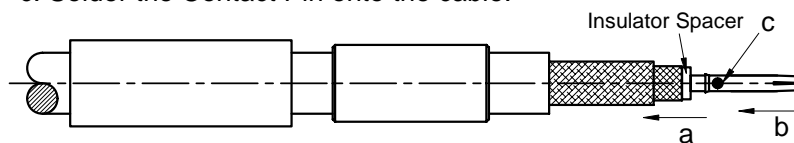
STEP 1

- Slide the Heatshrink Sleeve onto the cable (option).
- Slide the Crimp Ferrule onto the cable.
- Strip the cable according to the dimensions as below.



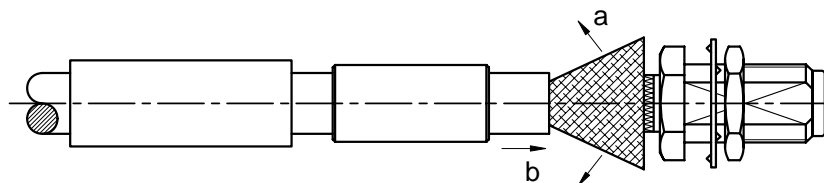
STEP 2

- Slide the Insulator Spacer onto the cable's center conductor.
- Slide the Contact Pin onto the cable's center conductor until it stops.
- Solder the Contact Pin onto the cable.



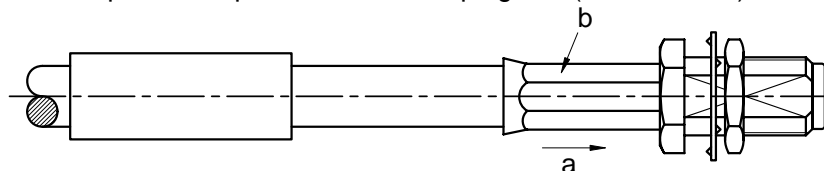
STEP 3

- Fan the braid.
- Slide the cable into the Main Body until it stops.



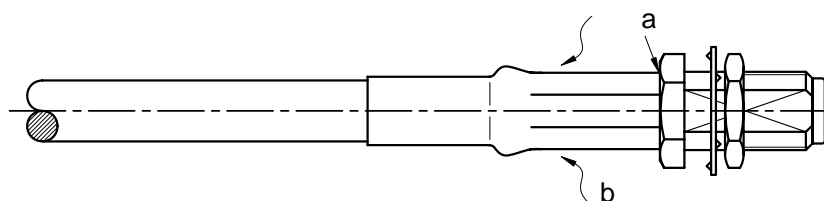
STEP 4

- Slide the Crimp Ferrule over the braid.
- Crimp the Crimp Ferrule with crimping tool (5.4mm HEX.).



STEP 5

- Cut the excess of braid if necessary.
- Slide the Heatshrink Sleeve over the Crimp Ferrule and heatshrink it in place (option).



Note: Dimensions in millimeters (mm).